



2024 NEW HOPE RECOGNITION REPORT

CARROLL, IOWA

With heartfelt gratitude, this book is
dedicated to all our friends whose
generosity has been instrumental to
the success of New Hope.

We apologize for any omissions or errors
that may have occurred. Please notify us so
that we may correct our records.





TABLE OF CONTENTS

Mission, Vision & Values..... 4

Leadership Roles..... 5

Message from the CEO & President of the Board... 6

Legacy Society..... 7

Message from Development..... 8

Residential Services..... 9

Connections..... 10

Employment Services..... 11

Home Support..... 12

2023 Appreciation Awards..... 13

Charitable Giving Options..... 14

Honor & Memorial Gifts..... 15

Donor Levels..... 16

Pioneers of Hope, Guardians & Advocates..... 16

Century Builders & President’s Club..... 17

Visionary Circle..... 18

Leadership Circle..... 19

Builders of Hope..... 20-21

Partners in Hope..... 22-27

Service Recognition..... 28

Service Awards..... 29

Volunteers..... 30





Mission

Enriching Lives

New Hope makes a profound difference in the lives of those we serve, our dedicated employees, and the communities in which we live.

Vision

New Hope empowers people to direct their lives through quality support, trust, and open communication.

OUR MISSION

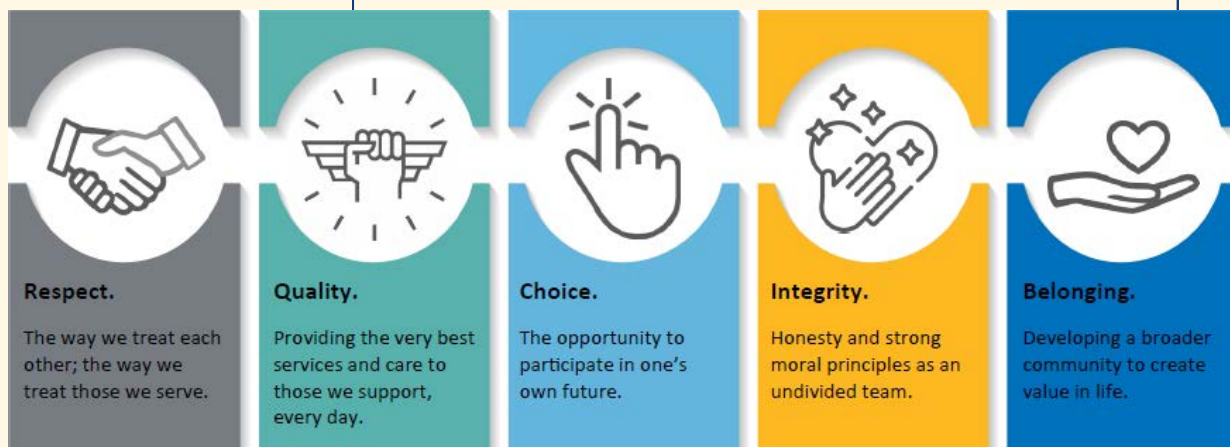
Fiscal year 2024 was a year of renewal for New Hope. With a mission to enrich the lives of those we serve, as well as our employees, and the communities within which we live, our direction has been aligned with our purpose. Our entire team continues to perform above standards and provide great care. A new effort has been given to recruit and retain our most important asset, our employees. All organizational operations are focused on five core values:

**Respect, Quality, Choice,
Integrity and Belonging.**

After more than 45 years, New Hope is moving forward, while maintaining our original mission of enriching the lives of those we serve.

Values

Our values reflect our commitment to empowering individuals to lead 4 fulfilling lives within the community.



The New Hope Board of Directors provides direction and oversight to the organization. Similarly, the New Hope Foundation Board of Trustees supports both the organization and the Board of Directors by ensuring a strong portfolio of donor support and investments to continue the mission of New Hope for years to come. Together, the members of these boards will Enrich Lives of those we serve, our families of loved ones and the dedicated team of employees.

2024 Board of Directors

Ed Smith, President
Eric Salmonson, Vice President
Norene Bauman, Secretary
Jeff Greteman, Treasurer
Josie Bengford
Dr. Julie Clayton
James Heiliger
Dr. Randal Hess
Denise Hubert
Kyl Knobbe
Joel Lundstrom
Kathie Mailander
Dave McNamara
Jeff Roiland
Kimberly Tiefenthaler

2024 Board of Trustees

Kevin Milligan, President
Aaron Juergens, Vice President
Aly Goos, Secretary
Kurt Baumhover
Bill Beck
Aubrey Kemerling
Dr. Julie Perkins
Eric Salmonson
Adam Wuebker



The New Hope Executive Team has decades of experience, which aids in Enriching Lives, both professionally and personally. The talented and experienced team provides day-to-day support for operations and services provided throughout the organization.

Executive Team

Jennifer Quigley, CEO
Danielle Fineran, Financial Officer
Toni Crocker, Human Resources Officer
Stacey Vonnahme, Public Relations Officer
Lacie Tedrow, Quality & Compliance Officer
Rhonda Feldman, Exec. Assistant





A MESSAGE FROM THE CEO & PRESIDENT OF THE BOARD

Dear Friends of New Hope,

We are delighted to present the 2024 Recognition Report, a celebration of the unwavering commitment and extraordinary contributions of everyone connected to our mission of **Enriching Lives**. This annual report highlights not only the achievements of the past year but also the dedication and heart of those who make the success of New Hope possible.

In the realm of disability services, success is not defined by buildings, equipment, or resources alone. True success stems from the incredible people working with and for New Hope. It is our dedicated team—supervisors, managers, and client support staff—whose work ethic, leadership, and compassionate care propel us forward every day. They are the foundation of our ability to enrich the lives of the individuals we support.

We have recently begun to make progress in achieving the key objectives of our strategic plan. From streamlining processes and leveraging enhanced technology to diversifying revenue streams and fostering a positive, competency-driven culture, each initiative reflects our commitment to excellence.

Of course, many of these achievements would not have been possible without the support of our generous donors. Your charitable gifts are investments in the future of New Hope. They provide vital equipment that ensures the safety and comfort of those we serve, create educational opportunities for our employees to grow and thrive, and enable the purchase of accessible vehicles that connect individuals to their communities. Your kindness leaves a lasting impact, and for that, we are deeply grateful.

Additionally, we celebrate the tireless contributions of our volunteers. From our dedicated board members to the cheerful Bargain Shoppe clerks, clothes hangers, donors, and family members, your selfless gift of time and talent is invaluable. Volunteers truly are the unsung heroes of New Hope, and your generosity does not go unnoticed.

As we reflect on the past year, let us take pride in the progress we have made together and look forward to the opportunities ahead. Thank you for your unwavering belief in our mission and for being a part of our journey. With your support, we will continue **Enriching Lives** and create a brighter future for everyone connected to New Hope.

With sincere gratitude,

6 *Jennifer Quigley* *Edward H. Smith, Jr.*



The Legacy Society was established the trustees of the New Hope foundation to honor friends and families who have chosen to further the ministry of new Hope by making a planned gift. These gifts are made by a bequest in an individual's will or by naming New Hope as the beneficiary of a trust, insurance policy, retirement plan, life estate agreement or other estate plans.

†Robert & †Helen Acton
 †Lola M. Ahrendsen
 †Robert & Joan Badding
 Norene & James Bauman
 †Norma & †Howard Berger
 Anonymous
 Cindy Bernholtz
 †June Blohm
 Claus & Judy Bunz
 Jane & Chuck Clark
 Jennifer Daniel
 Helen & †Lloyd DeMoss
 Bob & Myrna Drees
 †Delores Duncan &
 David Duncan
 Lyle & Connie Ellis
 †Marvin Farmer
 †Bill Feld Family
 Tim & Ann Fitzpatrick
 †Jack & Annabelle Fox
 †George A. &
 †Fonnie B. (Pat) Fry
 †Donna Kay (Sporrer) Gaffney
 †Father Robert Gralapp
 †Harriet Gray
 Anonymous
 Carol Gronstal
 Gregory Gruber
 Kim Hackett
 Stephen & Patricia Hanna
 †Erwin & †Iva Harmening
 †H. Ray Hayes

†Maxine Hayes
 †Lyle & †Bernice Heisterkamp
 Lillian Henry
 Frank & Cleone Hermsen
 Richard & Jude Higday
 †Marilyn Hill
 Steve & Kathy Hodges
 Kathy & Dale Hoffman
 Rita & †Eugene Huegerich
 †Esther Hulsebus
 Jodie & Tim Jansen
 Jerry & Jessica Janson
 †Allen K. Jensen
 Anonymous
 †H.S. (Jack) & †June Kesling
 †Henry & †Evelyn Kruger
 †Pearl & †Emil Kurth
 Paula & Bob Lambertz
 Tom & Nancy Loeck
 Tom & Pat Louis
 †Jeanne Lytle
 Anonymous
 Rhonda & Gary Mart
 Janet & Don Nesseth
 †Millie (Noethe) McCoy &
 Lisa Noethe
 Ed & Penny Miller
 †Dean & †Billie Mitchell
 †Phyllis Moody
 Clayton & Tina Netusil
 †Arthur A. Neu

†Mr. & †Mrs. Kenneth E.
 Newell
 †Mr. & Mrs. Duane Ogren
 Michael Ogren
 †William Partlow
 Keith & Jane Petersen
 Mark & Charlene Ramthun
 John Reglein
 Sally & Harry Reiman
 Doris & Tom Rinker
 Anonymous
 †Angie & †Merle Schoeppner
 Adam Schweers
 †Ivan T. Schultz, M.D. &
 Family
 Ellen Severin
 †Edward Sibenaller
 †Margaret Southern
 Wanda & †Jerry Sporrer
 †Lawrence & †Mildred
 Sporrer
 †Don & Myra Stangl
 Roman & †Arlene Steffes
 John & Kathy Steffes
 Lacie & Chad Tedrow
 †Mildred M. & †Ethan Allen
 Towne
 †Wilma & †Ken Tranter
 Jim & Becky Venner
 †Mary Yates





MESSAGE FROM DEVELOPMENT

Dear New Hope Supporters and Family,

Thank you for the profound impact you have made in enriching the lives of the individuals we support at New Hope over the past fiscal year. Your dedication and generosity continue to inspire us.

In November 2023, we kicked off our fiscal year with our annual Soup Day event. Thanks to your support, we raised enough funds to cover unbudgeted expenses for our clients. We were also thrilled to welcome our new CEO, Jennifer Quigley, to the New Hope family, where she quickly became acquainted with our incredible organization.

As the holidays approached, we spread cheer among our clients, supporters, and volunteers. A special thank you to American Home Shield and their employees for organizing a Christmas mitten tree for those living on campus. We also had a generous Christmas drive of essentials donated by several community members that was organized by the Fitzpatrick family! This was all a huge success and benefited every individual served by New Hope over the holiday season! These heartwarming traditions will continue in the upcoming year, bringing joy to our New Hope community.

Entering 2024, we began preparations for our 15th Biennial New Hope Charity Quilt Auction. This unique event has become a beloved part of our calendar, and I'm pleased to report that the auction was a resounding success, raising more than \$45,000 for New Hope in April.

Additionally, our great supporter, Cookies Food Products, hosted a spring Rib Wagon Event at the Carroll Bargain Shoppe. This annual event has become a favorite in the Carroll community, allowing us to enjoy delicious barbeque while supporting New Hope's mission.

We are also proud to announce the addition of five new members to our Legacy Society this fiscal year. These members are ensuring a bright future for New Hope by committing a portion of their estates to our organization, allowing us to grow and diversify our services for the individuals we support now and in the future. It is through these generous gifts that we can continue to thrive.

We are deeply grateful to all our supporters. A heartfelt thank you to our volunteers who selflessly dedicate their time in our five Bargain Shoppes, at our events, and directly with our clients. Your contributions are invaluable, and the impact you make at New Hope is a priceless gift.

With gratitude,

Angie Owen, Director of Development

Kevin Milligan, President of the Board of Trustees





RESIDENTIAL SERVICES

Safe and Supportive Homes

New Hope's residential services are at the heart of our community presence, providing homes that feel like family for those we serve. These homes, both on campus and in the community, are places where residents celebrate holidays, enjoy outings, share stories, watch movies, and support each other through life's moments. Most importantly, they offer a safe and supportive environment for independent, dignified living.

Each living arrangement is adapted to meet individual needs—whether that involves wheelchair accessibility, communication devices, or other equipment—ensuring comfort and success for each resident.

On Campus Living

Located on New Hope's Main Campus in Carroll, our on-campus residential homes are certified Intermediate Care Facilities, providing a comfortable, welcoming environment. Residents enjoy private rooms, personal decorations, and a range of on-campus amenities, including therapy services and activity spaces. The Activity Building offers physical, occupational, and speech therapies right on-site, and our Day ACTS program keeps residents active with social and wellness activities.

Community Living

New Hope also maintains community homes and apartments in Carroll and Glidden, providing around-the-clock support. This ensures that personalized assistance is available whenever needed. Our Community Living program includes meal prep assistance, medication support, transportation, and vocational guidance, empowering individuals to live with independence while staying connected to the local community.





CONNECTIONS PROGRAM

New Hope's *Connections* program is geared toward individuals with intellectual disabilities, brain injury or chronic mental illness who are looking for an environment where they can learn social skills, grow friendships, gain responsibilities and learn life skills. Participants are generally ages 16–88+. In 2023–2024, an average of 60 individuals were enrolled in the *Connections* Program with the goal of connecting individuals to the community around them, by providing opportunities to learn new skills through greater community inclusion.

A wide variety of activities are offered in the program including volunteering, day trips and recreational outings. Skills activities are also planned based on goals established through Individual Service Plans (ISP). These ISPs are developed with the participant, their family and New Hope's support team. The plan is updated on a regular basis to assess how an individual is doing in meeting their goals and to stay relevant to the participant's personal growth.

Program participants take part in a variety of activities which allow them to learn and grow their social skills, actively participate in their communities and grow those friendships. Over the past year, they not only explored local communities, they also traveled further away as well. Favorites included a trip to the Clay County Fair in Spencer, karaoke at the DMACC campus in Carroll, trips to Blank Park Zoo in Des Moines, and art classes at Carroll Design and Salvage.

Connections staff also added some new activities this past year, including a trip to The Iowa Arboretum and Gardens in Madrid, Bladen Memorial Art Museum, No Escape in Ames, Union Pacific Railroad Museum in Council Bluff, a tour of Trophies Plus in Breda, and a tour of Wells Blue Bunny in Le Mars (a favorite of the individuals and staff alike). Participants were active, and truly living New Hope's mission of enriching their lives through exploring all that Iowa has to offer.





MATCHING JOBS FOR PEOPLE

Employment gives purpose, and allows individuals to participate in their local communities. For these reasons, and many others, New Hope takes great pride in the success of its Employment Resources program. The Employment Resources team works with businesses to develop community employment opportunities, providing work at competitive wages, for individuals with disabilities. New Hope is committed to finding the perfect match between dedicated workers and employers looking to build a strong workforce.

Employment Resources provides job training and placement for individuals with disabilities for supported or independent employment that accentuates their skills and interests. New Hope's trained job coaches assist employees in gaining skills and training that will help them attain a job that is rewarding and fulfilling. Currently, New Hope works with nearly 50 businesses in a 60-mile radius, providing employment opportunities for approximately 75 individuals with disabilities. Employment Resources has been fortunate to partner with the following companies to employ individuals supported by New Hope in community jobs:

**Audubon Friendship Home
Audubon Rec. Center-Bull Pin
Rest.**

**Auen Distributing
Availa Bank, Coon Rapids
Bomgaars**

**BP Country Store
Breda Golf Course
Buckey's Creations**
(Pictured)**

**Carroll Apothecary
Carroll Area Child Care &
Preschool
Carroll Children's Museum*
Carroll Comm. School District
Carroll 5 Theater
Carroll County Solid Waste
Mgmt.
Carroll Public Library
Casey's**

**Church of Christ
Cleaning Solutions**

**Culver's
Days Inn
ET Video
Family Table
Fareway
Game One
Hy-Vee
Iowa Corn Processors
Kay Stevens Interiors
Kuemper Catholic
Schools
Las Margaritas, Glidden
McDonalds
Midwest Wholesale
New Hope
New Hope Bargain
Shoppe
New Opportunities**

**Olsen's BP, Atlantic
Options Ink
Plains Area Mental Health
Pizza Hut
Pizza Ranch, Carroll &
Denison
St. John Paul II Parish—
Holy Spirit
St. Paul Lutheran Church
Seasons
Slumberland Furniture
St. Anthony Regional Hospital
St. Anthony Nursing Home
Templeton Distillery
Walmart
Waspy's, Audubon**

*New this fiscal year

**New & Artisan Owned





HOME SUPPORT

Home Support and Services provides support to people of all ages with varying abilities and needs. Our goal is to support individuals living in their own homes or in their family home, placing a strong emphasis on skill building and community involvement. These services are provided for individuals who are independent in many ways, but occasionally need a hand here and there.

Home Support and Services Includes:

- Guidance in maintaining a home
- Budgeting, paying bills and gaining financial skills
- Personal appearance and hygiene
- Independently taking medication
- Shopping
- Participating in the local community
- Accessing transportation and options for greater mobility

New Hope works closely with individuals, their families and support networks to develop a customized support plan based on a person's skills, interests and dreams. We review and revise the support plan as new skills are gained and interests or dreams change.





2023 APPRECIATION AWARDS

These awards were presented at the Appreciation Banquet in December 2023.

Phic Lovan – National Seating & Mobility (NSM), nominated by Mary Ann Schulte, OT Dept

For over 15 years, Phic Lovan and NSM have worked closely with New Hope clients, delivering personalized services through our barrier-free lifts and our specialized wheelchairs. Phic has been our dedicated provider, setting up and customizing wheelchairs, seating systems, and adaptations in collaboration with clients, therapists, and Adaptive Equipment departments. He also facilitated the purchase of the Obe feeder. Phic has proven to be a reliable AE provider over the years, and he, along with NSM staff, provide regular services to meet our wheelchair and barrier-free lift needs. Our clients deeply appreciate his commitment to their well-being, trusting him to prioritize their unique needs in every design and service.



Carl Dieter – Family Table, nominated by Shawn Stalker, QA/Community

Carl Dieter of Family Table has truly invested time in getting to know the individuals and staff who gather for Friday night suppers at Family Table. She remembers everyone's names, understands their preferences, and always treats them with kindness and patience. The individuals look forward to seeing her each week, enjoying their time to catch up. Carl takes the time to engage in conversation directly with them, ensuring they feel seen and valued. She has consistently provided exceptional, personalized service to our group for at least the past three years. Her dedication shines through each week, without fail.



Renew Church, nominated by Beth Parkis & Connections Staff (Pictured Above)

Renew Covenant Church in Carroll continually goes above and beyond for the approximately 60 individuals in the New Hope Connections program. Pastor Tim Hawkinson and parishioners Mary Jo, Nora, Danny, and Megan have formed a wonderful partnership with Connections, embracing this mutual mission wholeheartedly.

Every other week, they lead a Bible study featuring scripture, singing, conversations, and even a craft or game. Mary Jo and Nora ensure that special song requests are honored, inviting those who wish to sing or play guitar to take the lead. Renew Church also hosts dances, with Pastor Tim as DJ and Mary Jo, Nora, Danny, and Megan helping to create an enjoyable evening of music and dancing. They've also opened their gym for playing basketball, games, and reading books. We are deeply grateful for the fellowship and social opportunities that Renew Covenant Church provides, and we look forward to more fun events!



CHARITABLE GIVING OPTIONS

New Hope provides a range of options for individuals to support its mission of enriching the lives of people with disabilities. Donors can contribute through various funds or by volunteering time and talent.

Your Gifts Can be Designated to Any of the Following Funds:

Annual Fund: Covers recurring needs, including adaptive equipment, vocational supplies, and program expenses across New Hope's locations.

Building and Equipment Fund: Supports new buildings, renovations, equipment replacements, and grounds improvements.

Endowment Fund: Offers a lasting impact by supplementing income for New Hope's future needs. Gifts from bequests, life insurance, retirement funds, and memorial gifts are dedicated here unless directed otherwise.

Staff Support Fund: Assists in rewarding and recruiting compassionate staff to enhance client care, providing a rich quality of life, social opportunities, and safety.

Client Special Needs Fund: Provides for essential client needs when other resources are unavailable.

Frank H. Hermsen Staff Development Fund: Supports staff training and development, advancing skills and leadership.

Gifts of cash and materials are always welcomed to assist New Hope in continuing the excellence in services due to the people we serve.

To learn more about New Hope giving opportunities, call Angie Owen, Development Director, at (712) 792-5500 x217.

Gifts in Honor Of Oct. 1, 2023 through Sept. 30, 2024

Martin & Carol Ahrens
Kelly Fitzpatrick
Jared Maulsby

Bryce Nobiling
Mark Wilken

Gifts in Memory Of Oct. 1, 2023 through Sept. 30, 2024

Norman Anderson	Mary J. Huberty	Mary Kay Schwabe
Janet M. Baumhover	Onna Lautner	Fernetta Siebrecht
Linda Baumhover	Maria Mahoney	Alva Sikkema
Richard J. Baumhover	James Masching	Sharon Singer
Dr. William Blohm	Cheryl Mayfield	Jennifer L. Sporrer
Hester Bolks	Merle McCrea	Arlene Stangl
Geraldine Brend	Connie McPherson	Carin "Carrie" Strause
Patricia Brown	Jeanne Meyers	Roger Struble
Thomas Chase	Dennis Molitor	Sharon Subbert
William Foval	Nancy Nielsen	Darrell Sunderman
William J. Geary	Connie Palmer	Karen Sweeney
Louis Grade	Marjorie Reiman	Audrey Weidl
Wayne Harmening	Wayne Rhinehart	Mary Ann Winninger
Mary Jane Heuton	LeRoy Rupiper	Lois Wunschel
Patricia Hinnens	Tom Schapman	

Estate Gifts & Bequests Oct. 1, 2023 through Sept. 30, 2024

Wilma Gosch Charitable
Trust****

Carol J. Woods Estate**

Donor Levels

Donors are listed according to their accumulated total contributions since new Hope began fundraising in 1975. A donor's name is added to the Donor Levels listing after reaching \$1,000 in total giving. Fiscal Year October 1, 2023–September 30, 2024

\$1,000,000 and Above	Pioneers of Hope
\$500,000–\$999,999	Guardians
\$250,000–\$499,999	Advocates
\$100,000–\$249,999	Century Builders
\$50,000–\$99,999	Presidents Club
\$25,000–\$49,999	Visionary Circle
\$10,000–\$24,999	Leadership Circle
\$5,000–\$9,999	Builders of Hope
\$1,000–\$4,999	Partners in Hope

The numbers of asterisks following a name (*) indicates the dollar range given this fiscal year.

*\$1–\$249 **\$250–\$499 ***\$500–\$999 ****\$1,000 or More

A (†) before a donor's name indicates the donor has passed away.

Pioneers of Hope *Accumulated giving totals \$1,000,000 or more*

Candy Classic Golf Outing/Farner-Bocken

†Robert & †Helen Acton Family

Guardians *Accumulated giving totals \$500,000–\$999,999*

†Dean & †Juanita Mitchell Foundation

Advocates *Accumulated giving totals \$250,000–\$499,999*

Anonymous Foundation

Connie & Jan Hook****

Availa Bank Foundation****

Estate of †Donald & †Leanna Kalkhoff

†Richard & Jean Lees

Century Builders *Accumulated giving totals \$100,000-\$249,999.*

†Mary E. Baumhover Trust
†Dr. & †Mrs. William Blohm
Carroll County
Carroll Rotary Club****
†Clara Dillavou Estate
†George Fry Trust, Jr.
Iowa Savings Bank Foundation

Knights of Columbus – Carroll****
The Kresge Foundation
†Henry & †Evelyn Kruger
Pella Rolscreen Foundation
Patricia & †James Pietig
Robert & Peggy Scanlan**
Warren H. Timmerman Trust

President's Club *Accumulated giving totals \$50,000-\$99,999.*

Muriel & David Arnold****
†Norma & †Howard Berger
Commercial Savings Bank**
Community Foundation of
Carroll County****
Cookies Food Products****
Drees Heating & Plumbing, Inc.***
†Wilfred Eischeid Estate
First Bank & Trust – Glidden
Myron & †Shirley Johnson****

Peter H. & E. Lucille Gaass Kuyper Foundation
McFarland Clinic – Carroll****
Dr. James & Katie McQueen
†Millie & †Norman Olberding
Olsen, Muhlbauer & Company*
†Adolf Peiffer Estate
Russ Reineke****
†Mr. & Mrs. Herbert Rich
Roswell & Elizabeth Garst Foundation****



Visionary Circle

Accumulated giving totals \$25,000-\$49,999

Allied Insurance Group
 American Home Shield
 American Legion of Iowa Foundation****
 Dr. & Mrs. Paul Armbrecht
 Deb & Jim Auen
 Auen Distributing****
 †Bob & Joan Badding
 Badding Construction
 Mr. & Mrs. Harold Baumhover****
 †JoAnn Baumhover Memorial
 Mr. & Mrs. Ron Black
 †Maxine Boylan Estate
 Carroll Broadcasting
 Commercial Federal Bank
 †Alice Corry Estate***
 Mr. W.T. Dahl
 Denison Drywall Supply
 Tom & Jean Farner****
 †Ruth Garnatz Estate
 Garst Seed Company
 Greteman & Associates**
 Carol Gronstal****
 Pat & Steve Hanna*
 Christine & †Craig Hensley****
 IASD Foundations
 Iowa Farm Bureau
 Iowa Public Service Company
 Richard Jobe****
 David & Marsha Johnson

Kurtis & Kathleen Kanne
 Dr. Steven & Jill Kraus
 Landus Corporation – Ralston
 Larry H. Schenkelberg Estate
 Madeline M. Levitt Foundation
 †Harry Lyons Estate
 Manning Community Funds***
 †Margaret D. Newell Estate
 Kathie & †Jim Mailander****
 Mid-American Energy – Carroll
 Dan & Nancy Mollner
 †Mr. & †Mrs. Kenneth Newell
 Mr. & Mrs. Jim Partlow****
 Pepsi-Cola General Bottlers – Carroll
 Prenger Slumberland Furniture*
 †Gilbert B. Renze Estate
 †Henry & †Varina Rutten Memorial
 Schildberg Investment Company
 †Sharon Singer Memorial
 †Margaret Southern Memorial
 Roman & †Arlene Steffes
 Templeton Savings Bank**
 Wellmark Foundation
 Mrs. JoAnn Thoreson****
 †Ethan Allen Towne
 †Mildred Towne Memorial
 †Wilma Gosch Charitable Trust****
 Gary & Brenda Weekley
 †Mary Yates Estate



Accumulated giving totals \$10,000-\$24,999

†Lola Ahrendsen Estate
Alliant Energy
American Can Company,
Overland Park, KS
American National Can Packaging
American Protein Corp.
Audubon State Bank
Mr. & Mrs. Ron Bailey
†Albert & †Dora Baumhover
Norb & Linda† Baumhover****
Benefit Source, Inc.-West Des
Moines
†Shirley Berger Estate
Lisa & Nick Bowdish****
Carroll Apothecary
Carroll Medical Center
Carrollton Inn
†Elvina Clemesen Estate
†Mrs. Margaret Collison
Vincent Collison
Crouse Cartage Company
†Hazel & †Wayne Daniels
Helen & †Lloyd DeMoss****
Margaret & Don Duncan***
E.T. Video
Employers Mutual Charities
Faith Lutheran Church-Odebolt***
†Joan Farver
†Father Robert Gralapp Estate
Judy Feld**
Mary & †Robert Feldmann*
First National Bank-Manning*
†George & †Fonnie Fry Memorial
Ann Glessner***
Michael & Cathy Greteman
Jedd & Diane Hagen
†H. Ray & †Maxine Hayes
†Hilka J. Hayunga Estate
†Alice & †Robert Hemphill

Herald Publishing Co.
Frank & Cleone Hermesen*
Richard & Jude Higday
Home State Bank-Jefferson****
Hy-Vee Food Store-Carroll
Juergens Produce & Feed
Kuyper Foundation
†Vernon Johansen Estate
+Mr. & +Mrs. Haven Kesling
†Jeri Kesling Memorial
Knights of Columbus-Fonda****
Knights of Columbus-Manning****
†Robert & Kathy Kraus
The Lampe Trust
Mrs. Mildred Lane
†Caryl & †Gordon Lauver
Lincoln Highway Pharmacy
†Richard & †Gloria Lintner
Denny Ludwig****
Gary & Carolyn Maloney****
Stacy Maloney
Gary & Rhonda Mart
†Mildred McConkey Estate
Joan & †Merle McCrea*
†Christine Mess Estate
Mid-Iowa Insurance Associates**
Scott Mitchell Memorial
Ken & Joan Mohr
Lon & Janet Mossman****
Leslie & Greg Murphy****
†John & Sally Norgaard
O'Halloran Intl., Inc. - Carroll
†Mr. & Mrs. Duane Ogren*
Ohde-Twit Funeral Home
†Helen Overmyer Estate
Jack & Nancy Penn****
†Phyllis Moody Estate
†Alma Platt Estate
Mr. & Mrs. Donald Pottroff****

Principal Financial Group
Promes Drainage, Inc.
Sue & Warren Puck
Mark & Charlene Ramthun***
Roger & Judy Reves****
Mr. & Mrs. Thomas Rinker**
†Lena Anna Roach Estate
In Honor of Mary Jane Royer
†Theresa Scanlan Estate
Scheels All-Sports Foundation
†Larry Schenkelberg
Schildberg Construction Co.
†Yvonne Schildberg Estate
†Ray Schrader
Schroeder's ABC Siding**
†Gladys Smith Estate
†Florence H. Somers Estate
Soppe Chiropractic*
†Lawrence & †Millie Sporrer
†Mildred Sporrer Estate
Lori & Steven Stangl
†Leonard & Juanita Stephenson
†Mr. & †Mrs. Ellis Stern Estate
Sundrup Transfer-Arcadia
†Mr. Bill Testroet
Scott & Dr. Cathy Curry Tigges
Delavan-Carroll Division
Dr. & Mrs. Thomas Ulrickson
United Charities of Glidden***
US West Foundation
Mary & Bob Van Horn
Lou & Marianne Walsh
Western Iowa Networks****
Westside State Bank
Janice & Ronald Wetter***
Don & Lu Wiederin
†Walt & Dorothy Wiederin****
†Mary Yates
Mr. & †Mrs. Duane Young

Leadership Circle

Accumulated giving totals \$5,000-\$9,999

Todd & Melissa Allen	†Delores Duncan	Mr. & Mrs. John Huchko*
American Trust & Savings Bank	Doug & Susie Duncan***	Rita & †Eugene Huegerich***
†Ethel Anderson Estate	David & Judy Dunn****	Linda & John Hutchins***
Association for Handicapped	Dr. & Mrs. Karl Eischeid	Iowa ARC
Citizens-Carroll County	Enterprise Mobility Foundation****	Dr. Troy & Grace Ivey***
†Dennis Bailey Memorial	Farm Credit Services of	Georgia Jackson*
Bank of the West-Carroll	America****	Jodie & Tim Jansen*
Michael & Ruth Barrett***	Farmers Coop Elevator-Arcadia	Marie Anna & Vern Jensen
Jim & Norene Bauman***	Farmers Savings Bank-Halbur	Mr. & Mrs. Eldon Juhl
†Linda Baumhover Memorial***	Farmland Foods-Kansas City	Mr. & Mrs. Roger Kanne
Mary & Virgil Baumhover*	Ed M. Feld Equipment Co.	Laurie & Rick Kasperbauer
Pam & Mark Beardmore	Feldmann & Company CPA's	Dr. Lou Ann Kiessling
Pricilla & †Mike Benton	First United Methodist	Knights of Columbus-Templeton
†Charles Berg Estate	Church-Carroll	Knobbe Plumbing***
†Norma J Berger Estate	Ann & Tim Fitzpatrick****	†Emil & †Pearl Kurth
†Lyle & Elva Bernholtz	Georgia Pacific	Kyle & Sharon Krause Family
Beuttler Associated Architects	†Mrs. Kay Glessner	Foundation
Bierl's Carpet One Floor & Home	†Father Robert Gralapp	Lake View Concrete
Birch Home Corporation****	Greene Co. Community Foundation	Fern & LaVern Langbein
Mr. & Mrs. Kevin Black	Mary & Jim Greteman	†Gordon & †Caryl Lauver Memorial
†George & Geneva Brincks*	Guthrie County ARC	†Marcia Lauver Memorial
†Mr. & †Mrs. John Buel	†Joe & Claudia Halbur*	†LaVonne M. Winner Estate
Carolyn & James Burnett*	Dr. Martin & Dee Halbur***	Legacy Foodservice Alliance, LLC
†Ann Carlson Estate	†Lawrence & Doris Handlos****	†Mrs. Marilyn Leiting
Carroll Area Victim Services	Lyle & Paula Hansen Jr.****	Ann & Bob Lenz****
Carroll Police Association #38	†Verdis Hansen Estate	†Msgr. Leo Lenz Estate
Champion Ford*	Harlan United Way	Lance & Gayle Levis
Channel Bio LLC	†Erwin & †Iva Harmening	Marjean & Tom Lipton
Chuck & Jane Clark	†Maxine Hayes	Tom & Nancy Loeck**
Computer Concepts of Iowa, Inc.	†Maxine Hayes Estate	Dale & Laura Ludwig
Mary & J. Wilts Cretsinger	†Harry J. Hayunga Estate	Ryan & Nikki Ludwig
Dr. & Mrs. Lynn Curry*	Deanne & Alvin Helgersen	Midwest Wholesale Products
D & D Peterson Farms, Inc.***	†Kenneth Hendrickson Memorial	Penny & Ed Miller*
Dr. Mike & Nancy Davis****	Lillian Henry*	Clay & Tina Netusil****
Deluxe Check Printers, Inc.	†Craig Hensley Estate	Naomi & †Art Neu
Dr. Jack & Darlene Donovan**	Speed & †Judy Herrig	Farmers Coop-Glidden
Samantha & Joe Downing	Audrey & Leslie Hill*	Robert & †Helen Nieland****
Myrna & Bob Drees*	Steve & Kathy Hodges	Sister Ione Nieland
Donna & Tom Drees***	Dale & Kathy Hoffman	†Millie (Noethe) McCoy Memorial
Drees Oil Company**	Horizon Equipment	†Millie Noethe McCoy Estate
Duffy Architects-Sioux City		Lori Norgaard**

Accumulated giving totals \$5,000-\$9,999



†Alex Ohl
 †Ed Ohl
 JoAnn & †Edward Ohl
 Linn & Linda Olerich**
 Connie Palmer†
 Performance Tire & Service**
 Phil & Michele Phillips*
 †Mrs. Genevieve Pietig
 Pioneer Hi-Bred Intl.-Dawson
 Plastico, Ltd.-Manning
 Prairie Meadows
 Jill & Chris Pudenz****
 Debera & Dave Quandt
 Kati Reagor***
 Raccoon Valley Bank***
 †Helen Reinhart Estate
 Renze Hybrids
 Janice Rhinehart*
 Marion Rich
 Dr. & Mrs. Scott Richardson*
 †Mr. Joe Riesselman, Jr.
 Keith & Jane Riley
 Jim & Janine Rinker***
 Vikki & Steven Rinker
 Robinson Ruhnke, P.C.**
 Mr. & Mrs. Byron Rosendahl**
 †Mr. & †Mrs. Matt Rothmeyer
 Phil & Sue Ruch****
 Rutten Vacuum Center*
 Sac City State Bank

Teri & †Tom Scharfenkamp**
 Roma Schimmer*
 Judy & †Mark Schoeppner
 †Angie Schoeppner
 Lillian & †H.F. Gus Schroeder
 Mrs. Ruth Schroeder
 †Dr. Ivan Schultz, M.D. Estate
 †Mr. & †Mrs. Joe Schwarte
 †Ruth & †A.J. Schwarzkopf
 Wayne & Shirley Seaman***
 Rev. Ky & Mrs. Glenda Searcy
 Sernett Department Store
 Sharp Funeral Home**
 †Lucille & †Wilbur Singsank
 Ann & David Slechta****
 Sara & John Smith*
 †Margaret Southern
 Mr. & Mrs. Lavern Spaulding
 Stone Printing*
 Bill & Pat Stork
 †Joleen Stork Memorial
 Joyce Struble
 Christie Sundrup**
 Ronald & Helen Sundrup**
 †Mr. & Mrs. Nolan Tillman****
 Jean & Gordy Toyne***
 True Value Hardware-Carroll
 Twit Funeral Home
 United Bank of Iowa-Carroll
 United Funds of Coon Rapids & Union
 Township
 United Funds of Odebolt
 Robert & Marsha Vollkommer
 Wenck Feeds
 †Dr. & †Mrs. Louis Westendorf
 †Joe White
 Mr. & †Mrs. Vern Wilken**
 Windstar Lines***
 †Mr. & †Mrs. Russell Wunschel
 Xi Epsilon Chi

Accumulated giving totals \$1,000-\$4,999

Acosta	Cindy & Bill Beck*	Capital City Fruit, Inc.
John & Deb Adams*	Benevity Community Impact Fund	Capital Sanitary Supply
Advanced Rehab Technologies, Inc.	†Don & Kathy Benson*	Car Freshener Corporation
Ag Processing, Inc.*	Mary Jane Berger	Caribbean Creme
Louise & William Ahrenholtz*	†Shirley Berger	Mr. & Mrs. Lyle Carlson***
Aid Assoc. For Lutherans #629	†Howard Berger Memorial	Carroll Area Nursing Service
Al Ide Marketing	Cindy Bernholtz	Carroll Board of Realtors
Al's Corner Oil Co***	Bonnie & Dale Berns	Carroll Cable Company
LeRoy & Sharlene Albertsen*	Bethany Lutheran Women of the Church	Carroll Cleaning Supply
Dr. & Mrs. Jon Allison	†Mr. & †Mrs. Eugene Bladt	Carroll Clinic Pharmacy
Allsource	†Dick & Lois Blair	Carroll County District Court
Arlene Alspach	Judith & Larry Block	Carroll Eye Care Associates*
Janet & †Keith Altemeier	June Blohm	Carroll Eye Clinic, P.C.
Altria Group	Randy Blohm**	Carroll Ford Lincoln Mercury
American Federal Savings & Loan	Bloomer's Bar & Grill	Carroll Glass Company*
American Legion Auxilliary	Joe & Laurie Blum*	Carroll Livestock Sales
American Legion Post	Blush Boutique LLC	Carroll Vet Clinic, P.C.
American Legion Post 22	Bock Family Foundation, Inc.	Casey's General Store
ANCOR	Boeck Construction*	Center Pharmacy
†Mrs. Mildred Andersen	Jeff Boes & Ann Byrne Boes	Central Christian Church
Swede & Sara Anderson	Barb & Jeff Boldt	Century 21 Real Estate
Andrews Roofing & Sheet Metal	Bongards Creameries	CES Client Council
†Dr. Walter Anneberg	†Marguerite & †George Bowman	†Thomas Chase
In Honor of †Clara Anthofer	Brakebush Brothers	Cheese Pleasers, Inc.
†Mr. & †Mrs. George Anthofer	†Flossie Brand Estate	†Adele Christensen Memorial
†Alice Anthofer Memorial	Brayton Lutheran Women*	Orvie & Margaret Christensen
Arcadia Telephone Co.	Breda Fertilizer Co.	†Mr. & †Mrs. Raymond Christensen
Arctic Glacier	Breda Savings Bank	†Dr. Robert & Mrs. Christensen
†Arlene Steffes Estate	Jeri Brend*	Church of Christ-Bagley
Arthur J Gallagher & Co	†Mr. Clarence R. Brenny	Citizens United for the Conservation of
†Mr. & †Mrs. William C. Arts	Theresa & Dale Breuer**	Underground Water
Arvco Containers	Diane & Brooke Brewer	Mr. & †Mrs. Karl Citurs
Aspinwall Cooperative Co.	†Mr. & Mrs. Delbert Brincks	Beverly & Gerald Clausen
Assured Partners***	Mike & Robyn Brinker*	CoBank
Atlantic Sheet Strip Steel Sales	Rebecca & Marshall Brown	Coca-Cola North America
Auburn Savings Bank	Mr. & †Mrs. Maurice Brown	Mary Collison
Audiological Services of Iowa**	Brown & Williamson Tobacco	†Dr. R.W. & Mary Jane Collison
Audubon County ARC	†Mr. & †Mrs. Albert Bruch	†Mr. & Mrs. LaRay Comes
Audubon Federated Women's Club	Barry & Mary Bruner*	Community Insurance Company
James Autry	Dave Bruner	Community State Bank-Paton
Mrs. Marie Babcock	Bruner, Bruner & Reinhart Law	Continental Can Company-Omaha
Mardy & †Bill Badding	Bruning Trucking	Continental Group Foundation, Inc.
Brian & Megan Badding	Buddin Children's Rental House	Conwood Sales Co. L.P.
†Mrs. Evelyn Bailey	In honor of †Elaine Buelt	Coon Rapids Insurance Agency
John Baker	Michael & Judy Bulian*	Country Journal Publishing Co., Inc.
Mrs. Hazel Bartels	Judith & Claus Bunz****	†Mr. & Mrs. George Crouse*
Mr. & Mrs. Gene Baumhover	Mrs. †Leonard Burg	Crouse Transportation Services
†Dorothy Baumhover Estate	Burke Corporation	†James & †Margaret Crow
†Lisa Baumhover Memorial	Dr. & Mrs. Joe Caniglia	†James Crow Memorial
Mark Beardmore Chevrolet, Inc.	Jamie & Sara Capella**	CSM Sales LLC

Accumulated giving totals \$1,000-\$4,999

†Mr. & †Mrs. Francis Cudahy
Mrs. Leone Culbertson
Culligan Water Conditioning
Karin & Ed Cutler
Dahn & Woodhouse Funeral Home
Dallas County Foundation
†Mr. & †Mrs. Beryl Dally
†Beryl Dally Memorial
Jen Daniel
Charles & Karey Daniels
Catherine & Harold Danner**
Gail & Barb Davis*
Le Ann Davis
Dawson United Charities*
†Mr. & †Mrs. Marcel De La Brosse
Karen DeBoth
Ellen & Chuck Deisbeck
†Lloyd DeMoss Memorial
Mr. Donald Dennert
Peg & Don Derner
In Honor of Tom Derner
†Alma Derner Memorial
The Des Moines Register
Mr. & †Mrs. Paul DeShaw
Donna DeShaw Estate
DeVere Company, Inc.
Larry Devine
†Esther DeVoe Estate
Dickinson, Mackaman, Tyler & Hagen
Dippin' Dots, Inc.
DMF Bait Company
†John & Lucille Dostal
Doumak Elk Grove, Illinois
Dean & Lana Downing
Duffy, Ruble, Mamura, Brygger
Dr. Tom & Monique Dulaney
†Mr. & Mrs Merritt Duncan
†Dorothy Duncan Memorial
Karen Dyer*
Earle of Sandwiches
Early Community Chest
Ebenezer Lutheran Church Women
Eckerman Jewelry
Ron & Jan Eich*
†Lidwina Eich Estate
†John A. Eich Memorial
†Mr. Wilfred Eischeid
Elk Horn Lutheran Church
Lyle & Connie Ellis*
Gary & Patricia Engelen

Father Michael Erpelding*
Drs. John & Elizabeth Evans
Jeanne & Gil Evers
F & H Foods, Inc.
fReal! Foods, LLC
Connie Faber & Daryl McGinley
Dennis & Catherine Faber
†Merlin & Helen Faber
Family & Specialty Medical Center
Dr. & Mrs. Nicholas J. Fangman
Fareway Stores
†Marvin Farmer Estate
Farmers Coop-Scranton
Farmers Coop-Farnhamville
Farmers State Bank- Lake View*
Farmland Foods-Carroll
Sandy & Cy Farner
LaVonne & †Steve Farner
†Bill Fasbender Memorial
Liz Feldmann
†Robert Feldmann Memorial
†Mr. & †Mrs. William Ferguson
Fidelity Charitable
In Honor of Kelly Fitzpatrick****
Fitzpatrick Family Christmas
Essentials Drive****
Foundation for the Challenged
†Jack Fox Memorial
Annabelle Fox
Paul & Cindy Francis
Linda & Dave Frank*
Mr. Dick H. Fredericksen
†Mr. & Mrs. Raymond Free
Freeman Decorating
Fresca Mexican Foods
Jane Fritz
Mrs. Donna Fude
Richard & Karla Fulton**
Carol Galotta**
Rhea Gantz
Ruth Garnatz
†Marilyn Geisler
†Mrs. Marlin Geisler
General Rental Services
Mr. Marv Glass*
Ann Glessner
Martha Kay Glessner
†Roy Glessner Memorial
Global Impact
Godfather's Pizza-Carroll*

Christa & Jeff Goeser
Lisa Goins
†Mr. Joe Grabner
†Tom Grabner Memorial
Green, Siemann & Greteman
Lori & Jeff Greteman***
Peggy & Matt Greteman*
†Mr. & †Mrs. Robert Greteman
†Lucille Greving Estate
Griffith Ford-Lincoln-Mercury
Mr. & Mrs. Thomas Griffiths
†Mr. & †Mrs. Joe Gronstal
Joan & Tom Gronstal*
†Mr. & †Mrs. Ben Guthrie
†Mr. & Mrs. Dennett Guthrie
Guthrie County State Bank
H & H Sports
Pam & Gary Haberl***
Eileen Hahn
†Mr. Raymond Hahn
Patsy Halbur*
Halbur Hardware
Hallett Construction Co.
Jolene Handlos
Dr. Lawrence Hanigan
Larry Hansen
In Honor of Lisa Hansen
†Lorraine Hansen Knudson
Mr. & †Mrs. Wayne Harmening
Eugene & Cecilia Haubrich
†Mr. & †Mrs. Lawrence Haverman
†Mr. & †Mrs. Dallas Havick
†H. Ray Hayes Memorial
Hayes Township Community Chest
Heartland Health- St. Joseph, MO
†Margaret Heater
†Mr. & Mrs. Howard Hedges
Leslie Heim
Patricia Heim
Mr. & Mrs. Elmer Hein, Jr
†Lester & †Caroline Heinen
Scott & Cindy Heinrichs*
†Joleen Heisterkamp Memorial
†Mr. & †Mrs. Lyle Heisterkamp
The Family of Joleen Heisterkamp
†Lucille & †Earl Helmbrecht
Mary Helmbrecht****
†Kenneth Hendrickson
†Mr. & †Mrs. Ernest Hermsen
In Honor of Frank H. Hermsen

<p>Lisa Hermesen*</p> <p>†Judy Herrig Memorial Paul & Bonnie Heuton*</p> <p>Paul H. & Lucille Heuton</p> <p>Cynthia Joan Hill</p> <p>Loren Hill*</p> <p>Kristina & Timothy Hinnners*</p> <p>HMC Corporation</p> <p>Hockenberry-Newburgh</p> <p>†Dr. & †Mrs. John Hodges</p> <p>Daryl Hoffman</p> <p>Jason & Dawn Hoffman****</p> <p>†Genevieve Hoffman Estate</p> <p>†Mrs. Jeanne Hoffmann</p> <p>Loras & Marlene Hoffmann</p> <p>Joan Hogan*</p> <p>Lisa & Jeff Honold</p> <p>Tom & Teresa Horbach</p> <p>†Cecelia Houlihan</p> <p>†James Houlihan Memorial</p> <p>†Herb & †Lucille Hudson</p> <p>†Jim Hulsebus Memorial</p> <p>†Mr. & †Mrs. Vern Hulsebus</p> <p>Immanuel Lutheran Women-Harlan***</p> <p>Immanuel Lutheran Women- Kimballton</p> <p>IMT Insurance Company</p> <p>IntegraSoft Inc.</p> <p>Iowa Restaurant Association</p> <p>Iowa State Troopers Assn.</p> <p>Sheryl & Douglas Ireland</p> <p>Deb James</p> <p>Jerry & Jessica Janson*</p> <p>Barb J. Janssen*</p> <p>Lynne & William Janssen</p> <p>Daniel Jarlenski, Sr.</p> <p>Marian Jarlenski</p> <p>†Andrew Jarlenski Memorial</p> <p>Jefferson BPO Elks #2306</p> <p>†Irma & †Orville Jobe</p> <p>†Mrs. Marie Johnson Memorial</p> <p>Janis & Ken Johnston</p> <p>Juergens Implement</p> <p>†Ted & †Ruth Kalen</p> <p>Brad & Nancy Kanne</p> <p>Kanne Realty & Associates</p> <p>Terry & Lois Kasperbauer*</p> <p>Kasperbauer Cleaners</p> <p>†Mrs. Arlene Kaspersen</p> <p>†Terry & Kelly Kaspersen</p>	<p>†Terry Kaspersen Family & Friends</p> <p>†Terry Kaspersen Memorial</p> <p>†Lauretta Kempf Estate</p> <p>Michelle & Mike Kennedy</p> <p>Terry Kenoyer</p> <p>Mrs. Barbara Grabner-Kerns & Mr. William Kerns*</p> <p>†Mr. & Mrs. James Kerwin</p> <p>Kessler Funeral Home-Audubon</p> <p>Mrs. Vesta Kidney</p> <p>†Mr. & †Mrs. Kienapfel</p> <p>Kirke-Van Orsdel Inc.</p> <p>Don Kitt*</p> <p>Kitt Plumbing & Heating</p> <p>Kiwanis Club of Carroll</p> <p>Yvonne Klaver</p> <p>†Mr. Donald Klever</p> <p>†Donald Klever Estate</p> <p>†Gilbert & †Pat Klindt Memorial</p> <p>†Lloyd & Jewel Kline</p> <p>KMR</p> <p>Knights of Columbus-Eagle Grove</p> <p>Knights of Columbus #14494**</p> <p>†Urban & Jean Knobbe</p> <p>†Lorraine & †Mel Knudson</p> <p>Mr. & Mrs. John Knutson</p> <p>Dick & Carolyn Koberg</p> <p>Janine Kock</p> <p>Elmer & Linda Kopaska</p> <p>Steve Kopecky</p> <p>Allison & Patrick Kopf</p> <p>Mr. Edwin Kopke</p> <p>Koster Grain**</p> <p>KPE Consulting Engineers**</p> <p>†Wynona M. Kruse Estate</p> <p>†Wilma Kruthoff</p> <p>Christy & Brian Kuhlmann</p> <p>†Dr. & †Mrs. Leo Kuker</p> <p>Joan Kuyper Farver</p> <p>Brian & Kathy Lage***</p> <p>Lake City State Bank</p> <p>Lake View Family Chiropractic**</p> <p>Paula & Bob Lambertz*</p> <p>Mr. Marvin Lampe</p> <p>Land O' Lakes Foundation</p> <p>Kenneth Landreth</p> <p>C.A. & Tracy Lane</p> <p>Mr. Clark Lane II</p> <p>Clark Lane</p> <p>†Shirley Lane Memorial</p>	<p>Fern & Lavern Langbein</p> <p>Laufersweiler Funeral Home Inc.****</p> <p>Mr. & Mrs. Loren D. Lauver</p> <p>Cindy & Kevin Lawler</p> <p>Katie & †Ed Lawler</p> <p>Mr. Max Lee</p> <p>†Dorothy Leemson</p> <p>Katherine Lees</p> <p>†Richard Lees Memorial</p> <p>†Robert & †Alberta Lees Memorial</p> <p>Mrs. Lola Leggett</p> <p>Robert & Pamela Leinbaugh*</p> <p>Beverly & Larry Leiting*</p> <p>†Marilyn Leiting Memorial</p> <p>†Mel Leiting Memorial</p> <p>Jean Lenz</p> <p>†Mr. & †Mrs. Paul Lenz</p> <p>Mr. & Mrs. Vincent Lenz</p> <p>Lenz Insurance & Real Estate**</p> <p>†Jan Leonard Memorial</p> <p>†Jeff Leonard Memorial</p> <p>Mrs. Murle Leonard</p> <p>Liberty Fruit Company</p> <p>Lidderdale Country Store*</p> <p>Lil Drug Store</p> <p>Lions Club-Auburn</p> <p>Lions Club-Audubon*</p> <p>Lions Club-Carroll*</p> <p>Lions Club-Churdan</p> <p>Lions Club-Exira</p> <p>Lions Club-Jefferson</p> <p>Carolyn & Robert Litwiller*</p> <p>†Paul & Moselle Loeschen</p> <p>Loffredo Fresh Produce</p> <p>Family & Friends of †Denise Louis</p> <p>†Denise Louis Memorial</p> <p>Tom & Pat Louis***</p> <p>Jerry & Mary Lux*</p> <p>Tom & Sheryl Lynch*</p> <p>†Harry & †Clara Lyons</p> <p>†Jeanne Lytle</p> <p>In Honor of Mark Maas</p> <p>†Eldon & Viola Maas</p> <p>Kathy Macke</p> <p>Elizabeth & Christopher Mailander</p> <p>†James Mailander Memorial</p> <p>Manning Womens Club</p> <p>David & Julie Mara</p> <p>Mrs. Martha Mara</p> <p>Bill & Nevada Martin</p>
---	---	--

Accumulated giving totals \$1,000-\$4,999

Masonic Lodge #369
 Julie & Jair Mayhall**
 Fred Maytag Foundation
 Mr. & Mrs. James G. Mazzo
 †Mrs. Dorothy McComb
 McCormack Distributing Co.
 †Father James McCormick
 Mark & Mary McCoy
 Millie McCoy
 †Merle McCrea Memorial****
 Mrs. Muriel & Dr. Daniel McDermott*
 Lynn McGuire
 Agnes McKone
 †Homi Mehta Memorial
 Mel-O-Cream Donuts
 Luella & Cecil Menke
 Amy & Don Mensen
 †Phyllis Merritt
 †Mr. & †Mrs. Robert Merritt
 Michigan Turkey Producers
 Marge Middaugh
 Midwest Market Industries Inc.
 James & Pat Mielk
 Dale Miksch
 Pat Millard
 Kay Miller
 †Maurice Miller Memorial
 In Honor of Paul Scott Mitchell
 †Dean Mitchell Memorial
 †Lela Moad Estate
 †Martin Mohr Estate
 Phyllis Moody
 Moorhouse Ready-Mix Co.
 Motion Technology, Inc.
 Motor Inn of Carroll*
 †Chuck Mounce
 MPS Video Productions, Inc.
 Mt. Carmel Mutual Insurance**
 Mr. & Mrs. Dale Mueggenberg*
 Mueller Furniture
 Ron Muhlbauer*
 Lori Mullen
 Mrs. Ruth Naberhaus
 †Mr. & †Mrs. Byron Nair
 Natural Look Salon
 Shirley Neary***
 Iris & Steve Nees*
 Kenneth Nees
 Janet & Don Nesseth

Netjets
 †Art Neu Memorial
 †Mr. Arthur Neu, Sr.
 †Art Neu Estate
 In Honor of Craig Newell
 Martha & Donald Newell*
 Barbara Nieland
 Nieland Family
 Frances & Larry Nielsen
 Laurie & Dave Nissen
 In Honor of Bryce Nobiling
 Ruth Nollen
 Sue & Jay Norgaard
 †Lou Northwall Estate
 Mr. & Mrs. Richard Nutting
 †Vincent O'Brien Estate
 †Jeannine O'Connor
 Carol & Todd O'Donnell*
 †David & †Tess O'Leary
 †Duane Ogren
 In Honor of Mike Ogren
 †Ruth Anne Ohde
 Ohde Funeral Home, Inc.
 Family & Friends of Alex Ohl
 Dean & Ami Onken*
 Our Savior's Lutheran Church,
 Women of the Word
 Our Saviour's Lutheran Church
 Mr. & †Mrs. Robert Owen
 P & G
 Jeanne & †William Partlow
 †Mavis Partlow Memorial
 †Perry Partlow Memorial
 Rosemary Partridge
 Mr. & Mrs. G.T. Patton*
 Peabody Energy Matching
 Gifts Program
 Peace Lutheran Church-Glidden*
 Peace Lutheran Church LWML
 Peace Lutheran Ladies Aid
 James & Mary Fran Pedelty
 Duane & Cindy Peiffer*
 Pella Corporation
 Pella Window Store-Carroll
 Pepsi-Cola Headquarters
 Jane & Keith Petersen*
 Petersen Construction Co.
 †Mr. & Mrs. Robert Peterson
 †Oren & †Ruby Peterson Memorial
 Mr. & Mrs. Gil Phillips

Dr. Aaron & Kelly Pick
 †James Pietig Memorial
 Pilgrim Lutheran Church
 Diane Pinneke
 Pitt Plastics, Inc.
 Pleasant Valley Woods, Inc.
 Thetia & Chris Polking**
 †Urban Polking
 Robin Pollard**
 Mr. & Mrs. Donald W. Pratt
 Premier Manufacturing, Inc.
 Ann Presley
 Prince of Peace Lutheran Womens
 Fellowship
 Professional Supply Company
 Family & Friends of Karen Promes
 Carol Promes*
 †Karen Promes Memorial
 †Mr. & †Mrs. Ivan Pryor
 Joelle & Ken Puck
 Family & Friends of Mary Pudenz
 Connie Pudenz
 Donna Pudenz***
 †Mary & Jim Pudenz
 †Leon Pudenz
 †Mary Pudenz Memorial
 Patricia & Michael Pudenz*
 Bea & Richard Pudenz
 Shirley & Neil Pudenz
 †Martha "Beth" Putney Memorial
 The Putney Foundation
 Quandt Auto Salvage, Inc.
 RAGBRAI-Carroll
 Jack & Kathy Ramaekers
 Matt & Gina Ramaekers
 Andrew Ramthun
 Carly & Jared Ramthun****
 †Roger Ramthun
 Susan Ramthun*
 Randy's Diesel Repair*
 Gaylin & Jan Ranniger
 Kathy & Royce Ranniger**
 Mrs. Lucille Ranniger
 †Wayne Ranniger Memorial
 Rick & Paulette Rasmussen*
 Bob & Judy Raue
 Mary (Kati) Reagor
 Regency Brokerage
 Ella M. Reiff

Partners in Hope, Cont.

Accumulated giving totals \$1,000-\$4,999

†Mike Reighard Memorial †Mr. & †Mrs. Cyril Reiling In Honor of Peggy Reiling †Harry & Sally Reiman* †Mr. Robert Reimer Cyril Renze** Pamela & Steve Renze* Republic Tobacco †David Rhinehart Memorial †Wayne Rhinehart Memorial †Herbert Rich Memorial †Maribel Rich Memorial †Erin Richardson Memorial Rob & Mary Ridgeway* Gary & Norma Riedmann Sondra & Jeremy Rierison* Anne & Jim Riesberg* Lou & Carol Riesenberg Rod & Trish Roberts †Don & †JoAnn Robertson Dave & Vicky Robinson Ronnoco Coffee †Esther & †Paul Roos †Esther Roos Memorial †Phillip Roos Memorial Lynn & Carol Rosendahl*** †Maxine Rosendahl Memorial Michelle Rosendahl †Richard Rosendahl Memorial Maxine & Richard Rosendahl Suzie Rosendahl †Stephen Rosendahl Memorial Rotert Construction Company Mike & Pat Ruhnke* Pam & Doug Rupiper* †Mr. & †Mrs. Henry Rutten †Varina Rutten Memorial Ryun, Givens & Company S & S Store Lauri & Allen Sackett Saverino & Associates In Honor of Mike Scanlan †Theresa Scanlan Memorial Arlan & Marcia Schaap Paul & Jane Schaben †John Scharfenkamp Memorial Karen & †John Scharfenkamp** †Gene & †Grace Schatz Mr. & Mrs. Ronald Schechtman Gerry Schelle Schenkelberg Implement	†Mr. & Mrs. Elmer Schettler Rita Schettler †Mr. & †Mrs. Roy Scheuermann Mrs. Yvonne Schildberg Earl & Kathy Schiltz* Pam & Ronald Schiltz Leona & Clair Schmitz Lois Schmitz †Mr. & Mrs. James Schoeppner †Kathleen Schoeppner Memorial Schreck Construction* Mrs. Mary Schreier* †Elmer & †Evelyn Schroeder †Virgil Schroeder Memorial Family & Friends of †LaVon Schulte Mary Ann & Gary Schulte* †LaVon Schulte †Jay Dee Scott Lila Scott Bob & Elaine Seaman* In Honor of Wayne Seaman Seidl Construction* Selective Insurance Ellen Severin* Mary Severson Mary Sexton Saundra & †Duane Shadle Maureen & Bill Sharp* Shelby County Extention Lisa & Brian Siepker Chris & Marilyn Siepker †Alva Sikkema Memorial**** Mr. Elmer Simons Simply Orange †Dallas Singer Memorial Dr. & Mrs. Dean Singsank †Dennis Singsank Dr. Mark J. Singsank Ed & Vicki Smith Mr. & Mrs. Robert Smith Stephen & Linda Smith J.T. Smith & Associates, Inc. L.A. Smith Company Smith Construction Barb & Snort Snyder Bette Snyder Elizabeth Snyder Estate Sparky's One Stop In Honor of Jenny Sporrer Joseph & Mary Kay Sporrer †Sharon & Richard Sporrer	†Donna Sporrer Gaffney Estate St. Lawrence Church-Carroll St. Patrick Catholic Women St. Paul Lutheran Church St. Paul Women's Guild St. Paul's WELCA-Holstein Lyle Staiert †Don & Myra Stangl †Don Stangl Memorial Star Destinations, Inc. Louis Starman* Marty & Michelle Steffes* †Faith & Jim Steinkamp †Faith Steinkamp Memorial Barry & Alinda Stelk* Mr. & Mrs. Alan Sterns Sonya & Dave Sterns Mary Stevens Julie & Thomas Stinard* Stine Seed Company †Joleen & Lynn Stork Joy Stork*** Bill & Pat Stork**** In Honor of †Roger Struble Swaney Equipment Co Joel & Mary Swanson Swedish Match Swisher International Richard Tadsen* Tallman Insurance Agency Carolyn Taphorn †Fran Taphorn Family †Fran Taphorn Memorial †Herbert Taylor Memorial †Herbert & †Jean Taylor Mr. & Mrs. James Taylor In Honor of Jon Taylor LeAn Taylor* Templeton Savings Bank Templeton Telephone Co.* †Mr. & †Mrs. John Terlouw Chuck & Mary Thatcher Bonnie Thein Thermo King Christensen Three Cees, Inc.-Arcadia Alan & Marlene Tiefenthaler Verna & †Rollin Tiefenthaler**** Mrs. Mary Tigges** Tiva Software †Msgr. J.E. Tolan Tony's Restaurant
--	---	--



- Barb Toohey
 †Mrs. Mildred Towne
 †Mary Toyne
 †Mary Toyne Memorial
 †Ralph Trachsel Estate
 †Wilma & †Ken Tranter
 Trinity Lutheran Ladies Aid
 Trinity Lutheran Ladies of Knierim
 Trinity Lutheran Women-Avoca
 Twin Lakes Christian Center
 †Mr. & †Mrs. Jo Twit
 U.S. Smokeless Tobacco Brands, Inc.
 †Julie Uitermarkt Memorial
 United Bank of Iowa-Glidden**
 United Bank of Iowa-Ida Grove**
 United Church of Christ-Lake View*
 United Commercial Travelers of America
 United Methodist Church-Odeboldt*
 United Methodist Women-Jefferson
 United Methodist Women-Wall Lake
 Mr. & Mrs. David Van Ahn
 John & Cindi Van Horn**
 Van Meter Industrial Inc
 Jean & Charles Van Sickle
 †Rick Vanderheiden
 †Ruth Vanderheiden Memorial
 Mary Clare Vaughn****
 Becky & Jim Venner
 Mary Pat & Bob Venner
 Terri & Denny Vetter*
 VFW Auxiliary-Rolfe
 Vision Care Clinic-Manning
 Phyllis Voegel
 Steve & Janell Vollstedt**
 Sharon & Ralph Von Qualen
 Dale & Kathy Vonnahme*
 Garry & Pam Vreeland
 †Mr. & †Mrs. Edward Walkup
 Wal-Mart Community Grant
 Program****
 Walsh Motors
 Sheri & Doug Wanning
 Gloria Watson
 †Wayne Watson Estate
 Wayland Mennonite Church
 Rose Weaver*
 Mrs. Martha Weber
 Weinstein Wholesale Meats
 John & Sandra Wells*
 Mr. & Mrs. Victor Wendl
 †Mr. & Mrs. Phillip Wenzel
 †Mr. Walt Wernimont
 Westside Community Chest
 Marilyn Wetherell
 Paul & Cynthia Wetter
 †Marie Wetter Estate
 Wetter Insurance Agency
 Karen & Charles Whalen*
 Wheatland Presbyterian Church Men's
 Fellowship-Wall Lake
 Mr. & Mrs. Ken Wheeler
 Elizabeth White
 †Helen White Memorial
 †Ann White-Nelson Memorial
 †Verlee Whitsell Memorial
 †Mr. & †Mrs. Merle Wiedemeier
 Mr. & Mrs. George Wieland
 †JoAnn Wilken
 In Honor of Mark Wilken
 †Margaret Wilkens
 Mr. Ray Wilkens
 Doris Wilson*
 Valerie Windschitl
 Paul & Tricia Windschitl*
 Winfield Builders Supply
 Darlene & John Winninger**
 †Joseph & †Katherine Winninger
 Mrs. Lavonne Winninger
 Mr. & Mrs. Mark A. Winninger*
 In Honor of Mary Ann Winninger
 †Joe Winninger Memorial
 Jana & Steve Winquist****
 †Alfred Wiskus Estate
 Trudy & James Wittmaack
 Wittrock Motor Company*
 Marcia & Don Woerdehoff
 †Sharon Woerdehoff Memorial
 Carol J. Woods
 †Ruth Woods Memorial
 †Duane & Sharen Wright
 Wunschel, Eich & McMinimee, PC
 Xcaliber International
 Zeitner & Sons, Inc.
 Iola Zimbeck*
 The Zurich U.S. Foundation

Service Recognition

New Hope proudly employs over 300 dedicated and caring staff. Our employees are one of our greatest assets. Their contributions are integral to carrying out our mission of Enriching Lives.

45+ Years of Service	25-29 Years of Service	10-14 Years of Service	Samantha Gathercoal
Mary Arrowsmith	Erin Campbell	Suzanne Brincks	Sara Gemberling
William Benson	Kimberly Johnston	Kylie Carmichael	Jeanne Gosch
Jackie Hackett	Jayne Klocke	Laurie Colbert	Steven Gosch
Joyce Hanners	Carol Schmidt	Shala Hass	Michelle Haberl
Nicola Holmes	Marilyn Siepker	Christine Klocke	Samantha Jensen
Jodie Jansen	Alison Sturm	Allisa Kluver	Christina Lampe
Mark Maas	20-24 Years of Service	Christine McCoy	Tammy Langel
Cathy Olson	Thomas Allen	Annette Mitchell	Robyn Lawler
40-45 Years of Service	Tina Allen	Lori Moore	Ann Lehnhoff
Karla Billmeier	Barbara Brauckman	Rebecca Mowearly	Tiffany Lindner
Rhonda Feldman	Jeanette Brinkman	Jason Mueggenberg	Edvin Lopez
Donna Grossman	Catherine Danner	Emily Mueggenberg	Marcus Lyons
Debra James	Bettyjoe Fagan	Patrick Odendahl	Haley Lyons
JoAnn Patzner	Deborah Gramowski	Donna Riesberg	Camille Muhlbauer
35-39 Years of Service	Dawn Hoffman	Jennifer Stahl	Alisa Nelson
Lori Bauer	Shellie Johnston	Jan Taylor	Maria Ortiz
Cindy Beck	Nicholas Lahr	Melissa Thompson	Beth Parkis
Rachel Blohm	Jessica Leinbaugh	Robert Vogl	Mandy Rath
Bonnie Heuton	Shanon Lux	Crystal Weitzl	Anne Snyder
Carla Markway	Kandi Quandt	Karlynn Wiederin	Pamela Soyer
Denise Middleton	Kathleen Schiltz	Rachel Wieland	Nicole Staiert
Brenda Naberhaus	Kelly Schubert	Lisa Willis	Shondrika Stalker
Frank O'Tool	Lacie Tedrow	5-9 Years of Service	Karen Standley
Mary Schulte	Jean Young	Andrea Beam	Debra Swanson
Michelle Vogl	15-19 Years of Service	Richard Berning	Dawnelle Van Unen
Renee Wernimont	Eric Frank	Johnathan Carmichael	Emilee Ward
30-34 Years of Service	Janet Hoffmann	Tiffany Cooper	Kristy Warnke
Janet Hardman	Alex Nixon	Taylor Crawford	Samantha Wempe
Lori Koster	Delia Osborne	Rhonda Croghan	Brenda Wittrock
Christy Kuhlmann	Michael O'Tool	John Davis	
Sean Monahan	Tammi Powers	Danielle Fineran	
Roma Schimmer	Stephanie Sani Saidou	Christine Fineran	
Tammi Seidl	Monica Schon	Sarah Foley	
Charles Whalen	Donna Shanks		
Josephine Wieland	Joyce Snyder		
	Allison Wiederin		

Employees who reach milestone service anniversaries are honored quarterly with a certificate of achievement. In 2023-2024, New Hope continued to recognize one employee each month with a **Bee the Hope Award** for their exemplary service to *Enriching Lives*.



October to December 2023

Mary Ann Schulte, 35 yrs	Diane Lappe, 5 yrs
Donna Riesberg, 10 yrs	Edvin Lopez, 5 yrs
Crystal Weidl, 10 yrs	Natashea Savala, 5 yrs



April to June 2024

Cathy Olson, 45 yrs	Brenda Naberhaus, 35 yrs
Karla Billmeier, 40 yrs	Carol Schmidt, 25 yrs
Cindy Beck, 35 yrs	Alison Sturm, 25 yrs
Rachel Blohm, 35 yrs	Tom Allen, 20 yrs



January to March 2024

Rhonda Feldman, 40 yrs	Stephanie Sani Saidou, 15 yrs
Marilyn Siepker, 25 yrs	Rachel Wieland, 10 yrs
Janet Hoffmann, 15 yrs	Steven Gosch, 5 yrs
Tammi Powers, 15 yrs	Pamela Soyer, 5 yrs



July to September 2024

Joyce Hinners, 45 yrs	Shala Hass, 10 yrs
Erin Campbell, 25 yrs	Tiffany Cooper, 5 yrs
Kathleen Schiltz, 20 yrs	Samantha Jensen, 5 yrs
Lacie Tedrow, 20 yrs	Marcus Lyons, 5 yrs
Michael O'Tool, 15 yrs	Mandy Rath, 5 yrs

Bee the Hope



October–December 2023

Tiffany Linder
Emily Muggenberg
Erica Williams

April to June 2024

Ann Lehnhoff
Michaela Staples
Jodi Wieland



January–March 2024

Mary Arrowsmith
Jeanette Brinkman
Erin Campbell

July–September 2024

Jeanne Gehling
Kandi Quandt
Kelsey Wagner





VOLUNTEERS

New Hope extends our sincerest appreciation to these wonderful people who give of their time and talent.

Aaron Ackerson	Patricia Dobson	Michelle Kennedy	Lauri Sackett
Donna Anthofer	Alice Drake	Zawadi Kiboss	Eileen Sander
Helen Ayers	Susie Duncan	Kelly Knueven	Betty Schechinger
Kyle Ballenger	Judy Dunn	Katie Kock	Jennifer Schiltz
Doug Bass	James Eich	Janice Kracht	Denis Schirck
Linda Bauer	Barbara Emery	Paula Lambertz	Dennis Schleisman
Norene Bauman	Kathy England	Fern Langbein	Becky Schweizer
Maureen Beck	Ann Fitzpatrick	Cindy Larsen	Lisa Siepker
Bill Beck IV	Connie Foval	Mary Lux	Sandra Snyder
Bill Beck III	Sheryl Frehse	Kathie Mailander	Jennifer Stahl
Cindy Beck	Kate Green	Crystal Marshall	Shane Standley
Mollie Bernholtz	Mary Greteman	Rhonda Mart	Caryl Stribe
Mary Jo Berning	Lorena Grossman	Lora Martin	Tony Strunk
Judy Beyer	Ann Gute	Linda McClellan	Tyson Tagg
Ann Boes	Jackie Hackett	Madison Meeves	Marcia Tiefenthaler
Jane Boes	Sherri Hoaglund	Kevin Milligan	Gary Tigges
Amy Brannan	Mildred Hoffman	Skyler Mowear	Velma Tigges
Mary Ann Brincks	Iola Hoogestraat	Betty Nees	Lynn Venteicher
Jeanette Brinkman	Susie Huebner	Iris Nees	Verla Venteicher
Barb Brockelsby	Karen Huhn	Lisa Nepple	Patricia Vogl
Susanne Brotherson	Sharon Hulsing	Ruth Noelck	Norma Vonnahme
Donna Brown	Susan Ikerd	Shelby Nicole Nosekabel	Lyle Vorsten
Natalie Bruner	Jodie Jansen	Sheila O'Tool	Linda Weber
Keifer Alexander Chibante	Barb Janssen	Tailar Olson	Stella Weber
Terry Clark	Marlyce Jensen	Emily Oswald	Joan Wehr
Judy Contner	Samantha Jensen	Carol Parrish	Joleen Wiederin
Cheryl Cruchelow	Sue Johnson	Gabriel Pettitt	Lu Wiederin
Gail Daniel	Pam Jones	Connie Pudenz	Jana Winquist
Cory Danner	Shanica Jones	Dorothy Pudenz	Angela Wittrock
Harold Danner	Marjorie Jurgensen	Emily Rebarcak	Joyce Wittrock
Suzy Danner	Stephena Kallemeyn	Diane Richards	Marcia Woerdehoff
Beth DeMoss	Dorothy Kanne	Luis Rivera-Vega	Judith York
Margaret Denker	Aubrey Kemerling	Benita Rotert	Marilyn Zimny
Roselyn Diers			





1211 E. 18TH STREET
CARROLL, IOWA 51401
712.792.5500

WWW.NEWHOPEVILLAGE.ORG